

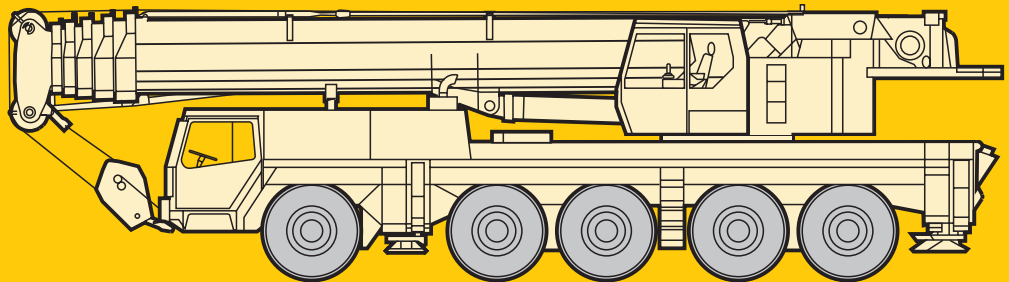
Technical Data
Caractéristiques techniques

LTM 1150/1

Mobile Crane
Grue automotrice

Telescopic boom
Flèche télescopique

184 ft



LIEBHERR

Lifting capacities on telescopic boom. Forces de levage à la flèche télescopique.

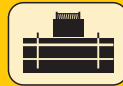
LTM 1150/1



41 ft – 184 ft



360°



110200 lbs

85%

ft	41 ft		54 ft	67 ft	80 ft	94 ft	107 ft	120 ft	133 ft	146 ft	159 ft	172 ft	184 ft	ft
ft	*													ft
9		269												9
10	352	266												10
11	281	253	207											11
12	237	237	207											12
13	221	221	207	202	163									13
14	208	208	198	192	163	133								14
15	196	196	188	182	163	133								15
16	189	189	181	175	163	133	101							16
17	181	181	174	168	160	132	101							17
18	175	175	168	162	155	131	101	67						18
20	162	162	156	150	145	128	101	84						20
22	151	151	146	140	136	123	101	84	61					22
24	140	140	137	132	127	117	100	83.5	66					24
26	130	130	128	124	119	116	99.5	82.5	66.5	49.5				26
28	119	119	120	117	113	111	96.5	80	66.5	51.4				28
30	108	108	112	110	107	107	93.5	77.5	66	51.5	41.3			30
32	94.5	94.5	105	103	101	102	91	74	64.5	51.6	41.5	40		32
34			98	96.5	95.5	97	88.5	71	62.5	51.6	41.8	39.6	32.7	34
36			91.5	90	89	92.5	85.5	68	60	51.6	42.2	38.8	32.7	36
38			86	84.5	85	87.5	83	65	58	50.5	42.2	38.1	32.7	38
40			80	79.5	81.5	82.5	79.5	62.5	55.9	49.3	42	37.4	32.6	40
45			63	69	71.5	71.5	70	56.3	51.2	45.5	40.3	35.4	31.3	45
50				62.5	63	62.5	61.5	51.9	47.2	42	37.7	33.6	29.9	50
55				53.2	55.9	55.3	54.1	48.1	43.7	39	35.2	31.8	28.4	55
60					49.8	49.1	48	44.4	40.3	36.3	32.8	30.2	27.1	60
65					44.7	44.1	43	41.7	37.1	33.9	30.8	28.7	25.8	65
70					36.7	39.8	38.7	39.2	34.2	31.7	28.9	27.3	24.6	70
75						35.2	34.8	36.1	31.4	29.6	27.2	25.9	23.4	75
80						30.3	32.8	32.7	29.1	27.6	25.6	24.4	22.2	80
85						25.3	30.8	29.7	27.5	25.4	24.1	23	20.9	85
90							28.3	27.2	25.7	23.9	22.7	21.7	19.7	90
95							24.2	24.9	23.7	22.3	21.3	20.5	18.6	95
100								22.7	22.6	21.2	20	19.3	17.6	100
105								20.5	21.4	20.1	18.9	18.2	16.5	105
110								18	19.8	18.7	17.6	17.2	15.7	110
115									18.1	17.2	16.7	16.2	14.8	115
120									15.8	16.4	15.9	15.3	14	120
125										15.7	15.2	14.2	13.3	125
130										14.6	14.1	13	12.5	130
135										12.1	13.1	12	11.9	135
140											12.1	11	11.1	140
145											11	10.1	10.2	145
150											8.8	9.4	9.5	150
155												8.8	8.9	155
160												7.6	8.3	160
165													7.7	165
170													7.2	170
175													4.7	175
%	I	0	0/ 0/ 0	46/ 0/ 0	46/ 0/ 0	92/46/ 0	46/ 0	92/46/46	92/46/46	92/46/46	92/46	92	100	I
	II	0	46/ 0/ 0	46/46/ 0	46/92/ 0	46/46/46	46/92	46/92/46	92/92/46	92/92/46	92/92	92	100	II
	III	0	0/46/ 0	0/46/ 0	46/46/46	46/46/46	46/46	46/46/46	46/92/46	92/92/92	92/92	92	100	III
	IV	0	0/ 0/46	0/ 0/46	0/ 0/46	0/46/46	46/46	46/46/46	46/46/92	46/92/92	92/92	92	100	IV
	V	0	0/ 0/ 0	0/ 0/46	0/ 0/46	0/ 0/46	0/ 0/46	46/46	46/46/92	46/46/92	46/46/92	46/92	92	100

* over rear / en arrière

TAB 138129 / 138132

Remarks referring to load charts.

- When calculating crane stresses and loads, German Industrial Standards (DIN) are applicable, in conformity with German legislation (published 2/85): The lifting capacities (stability margin) DIN/ISO are as laid down in DIN 15019, part 2, and ISO 4305. The crane's structural steel works is in accordance with DIN 15018, part 3. Design and construction of the crane comply with DIN 15018, part 2, and with F. E. M. regulations.
- For the DIN/ISO load charts, depending on jib length, crane operation may be permissible at wind speeds up to 5 resp. 7 Beaufort.
- Lifting capacities are given in metric tons.
- The weight of the hook blocks and hooks must be deducted from the lifting capacities.
- Working radii are measured from the slewing centreline.
- The lifting capacities given for the telescopic boom only apply if the folding jib is taken off.
- Subject to modification of lifting capacities.
- Lifting capacities above 220/276 kips only with additional pulley block/special equipment.

Lifting capacities are given in kips (1,000 lbs).

Lifting capacities on telescopic boom. Forces de levage à la flèche télescopique.

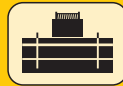
LTM 1150/1



41 ft – 184 ft



360°



77200 lbs

85%

ft	41 ft		54 ft	67 ft	80 ft	94 ft	107 ft	120 ft	133 ft	146 ft	159 ft	172 ft	184 ft	ft
	*													
9	276	273												9
10	273	271												10
11	255	254	207											11
12	237	237	207											12
13	221	221	207	202	163									13
14	208	208	198	192	163	133								14
15	196	196	188	182	163	133								15
16	189	189	181	175	163	133	101							16
17	181	181	174	168	160	132	101							17
18	174	174	168	162	155	131	101	67						18
20	159	159	155	150	145	128	101	84						20
22	145	145	144	140	136	123	101	84	61					22
24	132	132	132	130	127	117	100	83.5	66					24
26	121	120	121	120	119	116	99.5	82.5	66.5	49.5				26
28	112	110	111	110	109	110	96.5	80	66.5	51.4				28
30	103	101	103	101	101	104	93.5	77.5	66	51.5	41.3			30
32	93	92.5	95	93.5	96.5	96	89.5	74	64.5	51.6	41.5	40		32
34			88	86.5	90.5	88.5	84	71	62.5	51.6	41.8	39.6	32.7	34
36			82.5	82.5	84	82	77.5	68	60	51.6	42.2	38.8	32.7	36
38			77.5	78	79	76.5	72.5	65	58	50.5	42.2	38.1	32.7	38
40			72.5	74	74	71.5	67.5	62	55.9	49.3	42	37.4	32.6	40
45			62	63.5	63.5	61	57.7	55	51.2	45.5	40.3	35.4	31.3	45
50				54.8	54.9	53	50	49.2	45.4	42	37.7	33.6	29.9	50
55				47.7	47.9	46.4	44.7	44.2	41	38.5	35.2	31.8	28.4	55
60					42	41	41.3	39.1	36.7	34.7	32.8	30.2	27.1	60
65					37.3	36.5	37.1	34.9	32.6	32.3	30.6	28.7	25.8	65
70					33.4	32.6	33.5	31.4	30.5	29.4	27.6	27.2	24.6	70
75						29.3	30.3	28.4	28.2	26.5	25.7	25.1	23.4	75
80						26.5	27.5	25.7	25.6	24.1	24.2	22.7	22.1	80
85						23.9	24.9	24.3	23.3	22.7	22.1	20.5	20.4	85
90							22.6	22.7	21.4	21	20.2	18.7	18.6	90
95							20.6	20.9	19.5	19.3	18.5	17	16.9	95
100								19.1	18.3	17.8	16.9	15.4	15.4	100
105								17.6	17.3	16.2	15.4	14.1	14.1	105
110								16.2	15.9	14.8	14	12.9	12.9	110
115									14.7	13.6	12.8	11.7	11.7	115
120									13.6	12.4	11.6	10.6	10.7	120
125										11.4	10.6	9.5	9.6	125
130										10.5	9.7	8.7	8.7	130
135										9.8	8.9	7.9	7.9	135
140											8.2	7.2	7.2	140
145											7.6	6.4	6.5	145
150											6.9	5.7	5.8	150
155												5.1	5.2	155
160												4.5	4.6	160
165													4	165
170													3.4	170
175													3	175
I	0	0/ 0	46/ 0/ 0	46/ 0	46/ 0/ 0	46/ 0	92/46/ 0	92/46/ 0	92/46/ 0	92/46	92	100	100	I
II	0	0/ 0	46/46/ 0	46/92	92/46/ 0	46/46	46/46/46	92/46/46	92/46/92	92/92	92	100	100	II
III	0	46/ 0	0/46/ 0	46/46	46/46/92	46/46	46/46/46	46/46/92	92/92/92	92/92	92	100	100	III
IV	0	0/ 0	0/ 0/46	0/ 0	0/46/46	46/46	46/46/92	46/92/92	46/92/92	92/92	92	100	100	IV
V	0	0/46	0/ 0/46	0/ 0	0/46/46	46/92	46/92/92	46/92/92	46/92/92	46/92	92	100	100	V

* over rear / en arrière

TAB 138130 / 138133

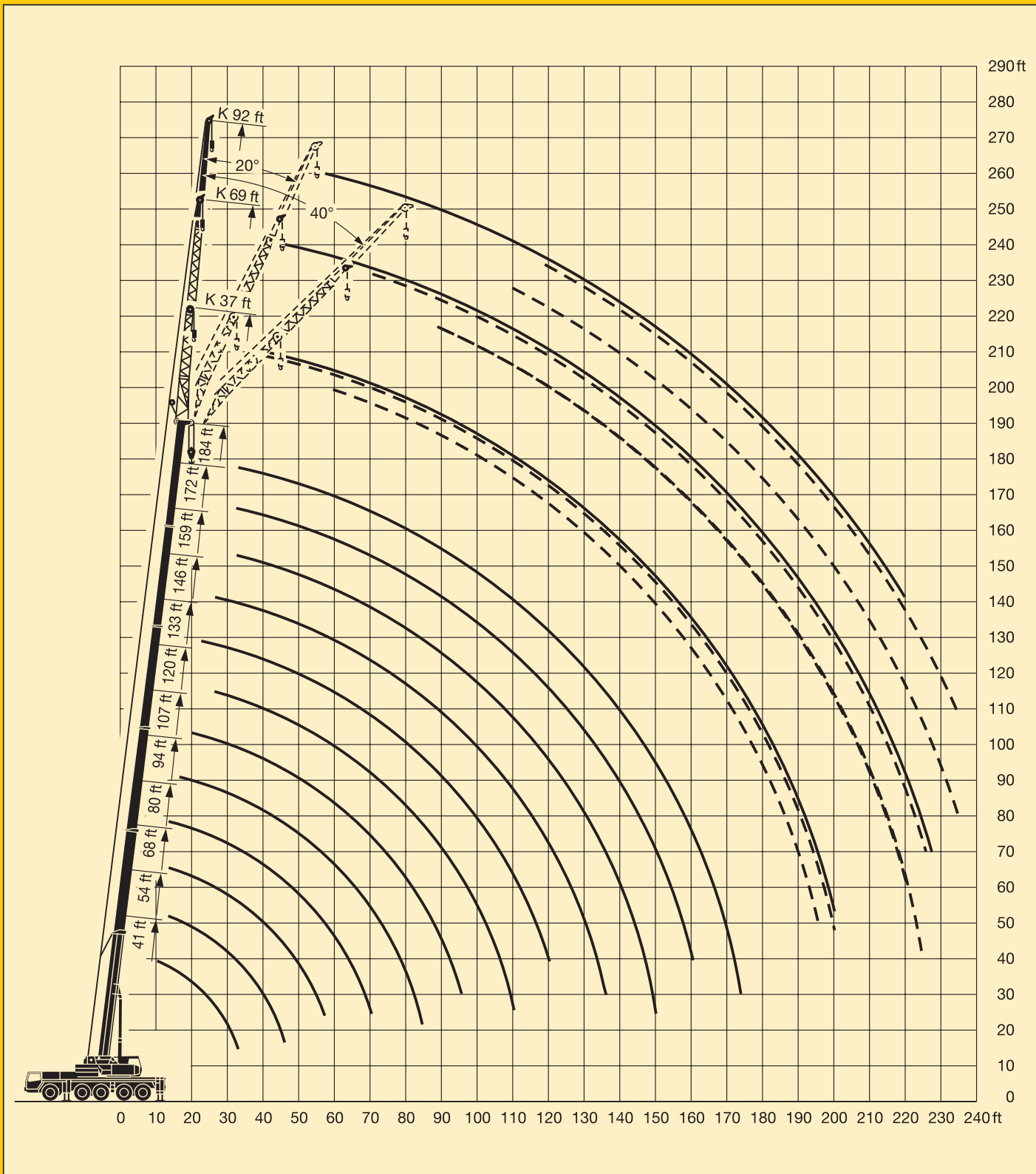
Remarques relatives aux tableaux des charges.

- La grue est calculée selon normes DIN conformément au décret fédéral 2/85. Les charges DIN/ISO respectent les sécurités au basculement requises par les normes DIN 15019, partie 2 et ISO 4305. La structure de la grue est conçue selon la norme DIN 15018, partie 3. La conception générale est réalisée selon la norme DIN 15018, partie 2, ainsi que selon les recommandations de la F. E. M.
- Les charges DIN/ISO tiennent compte d'efforts au vent selon Beaufort de 5 à 7 en fonction de la longueur de flèche.
- Les charges sont indiquées en tonnes.
- Les poids du crochet ou de la moufle sont à déduire des charges indiquées.
- Les portées sont prises à partir de l'axe de rotation de la partie tournante.
- Les charges données en configuration flèche télescopiques s'entendent sans la fléchette pliante repliée contre le télescope en position route ou en position de travail en tête de télescope.
- Charges données sous réserve de modification.
- Forces de levage plus de 220/276 kips seulement avec moufle additionnel/équipement supplémentaire.

Les forces de levage sont données en kips (1,000 lbs).

Lifting heights. Hauteurs de levage.

LTM 1150/1

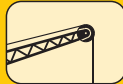


Lifting capacities on the folding jib. Forces de levage à la fléchette pliante.

LTM 1150/1



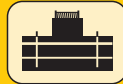
41 ft - 184 ft



37 ft*



360°



110200 lbs

85%

ft	41 ft			133 ft			146 ft			159 ft			172 ft			184 ft			ft
	37 ft			37 ft			37 ft			37 ft			37 ft			37 ft			
	0°	20°	40°	0°	20°	40°	0°	20°	40°	0°	20°	40°	0°	20°	40°	0°	20°	40°	
11	34.6																		11
12	34.6																		12
13	34.6																		13
14	34.6																		14
15	34.6																		15
16	34.6																		16
17	34.2																		17
18	33.6	29.8																	18
20	32.2	29.7																	20
22	30.6	28.8																	22
24	29	27.8																	24
26	27.5	26.6		34.6															26
28	26.2	25.7	19.9	34.6			34												28
30	24.9	24.8	19.8	34.6			34												30
32	23.6	24	19.7	34.6			34		28.4										32
34	22.3	23.2	19.3	34.6			34		28.4										34
36	21	22.5	18.9	34.6			34		28.4				23						36
38	19.8	21.8	18.6	34.6	29.8		34		28.4				23			17.4			38
40	18.8	20.9	18.2	34.6	29.7		33.8		28.3				23			17.4			40
45	16.7	18.5	17.6	34.2	28.4		32.4	27.9	27.3	25.5			22.4			17.4			45
50	14.9	16.3	16.9	32.6	27.1	19.9	31.1	27	19.9	26	24.6		21.7	19.2		17.4	17		50
55	13.2	14.4	15.5	30.7	26	19.7	29.6	25.9	19.7	24.7	23.6	17.4	20.8	18.8		17.3	16.7		55
60	11.7	12.7	13.5	28.9	24.9	19.3	28.1	25	19.3	23.5	22.5	17.4	19.8	18		16.9	16.1		60
65	10.6	11.3	11.8	27.3	24	18.9	26.6	24.1	18.9	22.4	21.4	17.4	18.8	17.3	16.5	16.2	15.5	15	65
70				25.8	23.2	18.5	25.1	23.3	18.5	21.3	20.4	17.4	18	16.6	16	15.5	15	14.5	70
75				24.3	22.4	18.1	23.6	22.6	18.2	20.3	19.4	17.4	17.2	15.9	15.4	14.9	14.4	14	75
80				22.7	21.6	17.8	22.2	21.8	17.9	19.3	18.5	17.3	16.4	15.3	14.9	14.2	13.8	13.5	80
85				21.2	20.8	17.6	20.9	20.8	17.7	18.4	17.7	17	15.6	14.7	14.3	13.6	13.3	13	85
90				19.9	19.6	17.4	19.7	19.9	17.5	17.6	16.9	16.4	14.9	14.1	13.8	13	12.7	12.5	90
95				18.7	18.5	17.2	18.5	18.8	17.3	16.7	16.2	15.7	14.2	13.6	13.3	12.5	12.2	12.1	95
100				17.7	17.5	16.9	17.4	17.7	17.1	15.9	15.5	15.1	13.6	13	12.8	11.9	11.7	11.7	100
105				16.8	16.5	16.6	16.3	16.7	16.9	15	14.8	14.5	13	12.5	12.4	11.4	11.2	11.2	105
110				15.9	15.7	15.7	15.3	15.7	16.1	14.1	14.2	13.9	12.4	12	12	11	10.8	10.8	110
115				15.1	14.9	14.9	14.5	14.8	15.2	13.3	13.5	13.4	11.8	11.5	11.5	10.6	10.4	10.4	115
120				14.3	14.1	14.2	13.7	14	14.3	12.7	12.9	12.9	11.3	11	11.1	10.2	10	10.1	120
125				13.5	13.4	13.5	12.8	13.3	13.5	12.1	12.2	12.3	10.8	10.6	10.7	9.8	9.6	9.7	125
130				12.8	12.7	12.9	11.7	12.3	12.6	11.5	11.6	11.9	10.5	10.2	10.4	9.4	9.3	9.3	130
135				11.8	12.1	12.3	11	11.3	11.6	10.7	11.1	11.3	10	9.9	10	9	9	9.1	135
140				10.8	11.3	11.5	10.4	10.4	10.6	9.9	10.4	10.6	9.6	9.6	9.7	8.6	8.7	8.8	140
145				10	10.4	10.5	9.9	9.9	10.1	9.3	9.6	9.9	9.1	9.2	9.4	8.2	8.4	8.5	145
150				9.3	9.6	9.6	9.3	9.4	9.7	8.8	8.9	9.2	8.7	8.9	9.1	7.8	8.1	8.3	150
155				8.7	8.9		8.7	9	9.1	8.4	8.5	8.6	8.1	8.5	8.7	7.5	7.7	7.9	155
160							8.2	8.4	8.5	8	8.1	8.2	7.5	7.9	8.2	7.1	7.3	7.5	160
165							7.6	7.8		7.7	7.7	7.9	7	7.4	7.6	6.8	7	7.2	165
170							7.1	7.3		7.3	7.5	7.6	6.5	6.8	7	6.4	6.7	6.8	170
175										6.9	7	7.1	6	6.3	6.4	6	6.3	6.4	175
180										6.4	6.6		5.5	5.8	5.9	5.5	5.8	6	180
185													5	5.3	5.4	5	5.4	5.5	185
190													4.5	4.8	4.8	4.5	4.8	4.9	190
195																4	4.3	4.3	195
200																3.5	3.8		200
I	0			46/ 0			92/46			92/46			92			100			I
II	0			92/46			92/92			92/92			92			100			II
III	0			92/92			92/92			92/92			92			100			III
IV	0			46/92			46/92			46/92			92			100			IV
V	0			46/92			46/46			46/92			92			100			V

* one-parted folding jib / fléchette pliante à 1 élément

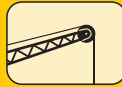
TAB 138135 / 138138 / 138141

Lifting capacities on the folding jib. Forces de levage à la fléchette pliante.

LTM 1150/1



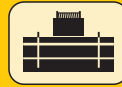
41 ft – 184 ft



69 ft*



360°



110200 lbs

85%

ft	41 ft			133 ft			146 ft			159 ft			172 ft			184 ft			ft
	69 ft			69 ft			69 ft			69 ft			69 ft			69 ft			
	0°	20°	40°	0°	20°	40°	0°	20°	40°	0°	20°	40°	0°	20°	40°	0°	20°	40°	
13	17																		13
14	17																		14
15	16.9																		15
16	16.8																		16
17	16.7																		17
18	16.6																		18
20	16.4																		20
22	16.2																		22
24	16																		24
26	15.9																		26
28	15.7				17														28
30	15.6				17														30
32	15.4	13.8			17			15.8											32
34	15.2	13.8			16.9			15.8											34
36	14.9	13.8			16.8			15.8		14.3									36
38	14.7	13.8			16.7			15.8		14.3			12.4						38
40	14.5	13.7			16.5			15.7		14.3			12.4						40
45	13.9	13.1			16.3			15.5		14.3			12.4			10.7			45
50	13.4	12.5	10.7		16			15.3		14.1			12.3			10.7			50
55	12.8	12	10.5	15.8	13.8			15.1	13.6	14			12.3			10.7			55
60	12	11.5	10.1	15.6	13.8			14.9	13.5	13.7			12.2			10.7			60
65	11.1	11	9.6	15.4	13.5			14.7	13.2	13.6	12.5		12.1			10.6			65
70	10.2	10.6	9.2	15.1	13.2			14.5	12.9	13.4	12.2		11.7	10.8		10.4	9.7		70
75	9.5	10.1	8.9	14.8	12.9	10.2		14.3	12.6	13.2	12		11.3	10.6		10.2	9.6		75
80	8.8	9.6	8.7	14.4	12.6	10.2	14	12.3	9.9	13	11.8		10.9	10.3		9.9	9.5		80
85	8.2	9.1	8.5	14.1	12.3	10	13.7	12.1	9.9	12.9	11.5	9.5	10.5	10		9.6	9.2		85
90	7.7	8.4	8.3	13.8	12	9.8	13.5	11.8	9.7	12.5	11.3	9.4	10.2	9.7	9	9.4	8.9	8.5	90
95	7	7.7	7.8	13.6	11.7	9.6	13.2	11.6	9.5	12	11.1	9.3	9.9	9.4	8.9	9.1	8.7	8.4	95
100				13.3	11.5	9.4	13	11.4	9.3	11.5	10.8	9.1	9.6	9.2	8.7	8.8	8.4	8.2	100
105				13	11.2	9.2	12.7	11.2	9.2	11.1	10.5	9	9.3	8.9	8.5	8.5	8.2	8	105
110				12.6	11	9.1	12.5	11	9.1	10.7	10.2	8.9	9	8.6	8.3	8.3	8	7.9	110
115				12.1	10.8	9	12.1	10.8	8.9	10.3	9.9	8.8	8.7	8.4	8.2	8	7.7	7.7	115
120				11.6	10.6	8.8	11.6	10.6	8.8	9.9	9.6	8.6	8.5	8.1	8	7.8	7.5	7.5	120
125				11.2	10.4	8.7	11.2	10.4	8.7	9.6	9.3	8.5	8.2	7.9	7.8	7.5	7.3	7.3	125
130				10.7	10.1	8.6	10.6	10.2	8.6	9.2	9	8.4	8	7.7	7.6	7.3	7.1	7.1	130
135				10.2	9.9	8.6	10.1	10	8.5	8.9	8.8	8.4	7.7	7.5	7.4	7	6.9	6.9	135
140				9.7	9.6	8.5	9.6	9.8	8.5	8.6	8.5	8.3	7.5	7.3	7.3	6.8	6.7	6.7	140
145				9.4	9.4	8.4	9.2	9.6	8.4	8.3	8.3	8.3	7.3	7.1	7.1	6.6	6.6	6.6	145
150				9	9.1	8.4	8.8	9.3	8.4	8.1	8.1	8.1	7	6.9	6.9	6.4	6.4	6.4	150
155				8.7	8.8	8.4	8.4	8.9	8.3	7.8	7.8	7.9	6.8	6.8	6.8	6.2	6.2	6.3	155
160				8.3	8.4	8.4	7.8	8.5	8.3	7.5	7.6	7.7	6.6	6.6	6.7	6	6	6.2	160
165				8	8.1	8.2	7.3	8	8.3	7.2	7.4	7.5	6.4	6.5	6.5	5.8	5.9	6	165
170				7.6	7.8	8	6.9	7.4	7.8	6.8	7.2	7.3	6.2	6.3	6.4	5.6	5.7	5.9	170
175				7.2	7.5	7.7	6.7	6.9	7.2	6.3	6.9	7.1	6.1	6.1	6.3	5.4	5.5	5.7	175
180				6.7	7.1		6.4	6.5	6.7	5.8	6.4	6.8	5.8	5.9	6.1	5.2	5.4	5.5	180
185				6.3	6.6		6.1	6.3	6.4	5.6	6	6.3	5.6	5.8	6	5	5.2	5.4	185
190				5.9	6.1		5.8	6.1	6.1	5.4	5.5	5.7	5.1	5.6	5.8	4.7	5.1	5.2	190
195							5.5	5.7		5.2	5.4	5.5	4.7	5.3	5.5	4.4	4.8	5	195
200							5.1	5.3		5	5.2	5.3	4.2	4.8	5.1	4	4.6	4.8	200
205										4.8	5		3.8	4.4	4.6	3.5	4.2	4.5	205
210													3.3	3.9	4	3.1	3.8	4	210
215													2.9	3.4	3.4	2.7	3.3	3.5	215
220													2.6	2.9		2.3	2.8	3	220
225																2.4	2.4	2.5	225
I		0			46/ 0			92/46		92/46			92			100			I
II		0			92/46			92/92		92/92			92			100			II
III		0			92/92			92/92		92/92			92			100			III
IV		0			46/92			46/92		46/92			92			100			IV
V		0			46/92			46/46		46/92			92			100			V

* bi-parted folding jib / fléchette pliante à 2 éléments

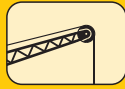
TAB 138135 / 138138 / 138141

Lifting capacities on the folding jib. Forces de levage à la fléchette pliante.

LTM 1150/1



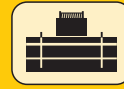
41 ft – 184 ft



92 ft*



360°



110200 lbs

85%

ft	41 ft			133 ft			146 ft			159 ft			172 ft			184 ft			ft
	0°	20°	40°	0°	20°	40°	0°	20°	40°	0°	20°	40°	0°	20°	40°	0°	20°	40°	
18	12.1																		18
20	12.1																		20
22	12																		22
24	12																		24
26	12																		26
28	11.9																		28
30	11.8																		30
32	11.6			12.1															32
34	11.5			12.1															34
36	11.3			12.1															36
38	11.2			12.1			11.2												38
40	11			12.1			11.2												40
45	10.5	9.7		12			11.2			9.9									45
50	10.1	9.5		11.9			11.1			9.9			8.8			7.8			50
55	9.6	9.2		11.8			11			9.9			8.7			7.8			55
60	9.2	8.7		11.6			10.9			9.9			8.7			7.8			60
65	8.7	8.3		11.4			10.8			9.8			8.7			7.8			65
70	8.4	8	6.6	11.2	9.5		10.7	9.3		9.7			8.6			7.8			70
75	8	7.6	6.4	10.9	9.4		10.5	9.1		9.6	8.5		8.5			7.7			75
80	7.7	7.3	6.2	10.6	9.1		10.3	8.9		9.4	8.5		8.4			7.7			80
85	7.4	7	6	10.4	8.9		10.1	8.7		9.3	8.3		8.2	7.5		7.5			85
90	7.1	6.7	5.8	10.1	8.7	6.6	9.8	8.5		9.1	8.1		8	7.4		7.3	6.8		90
95	6.8	6.5	5.6	9.8	8.4	6.5	9.6	8.3	6.4	9	7.9		7.8	7.2		7.1	6.7		95
100	6.5	6.4	5.4	9.5	8.2	6.4	9.4	8.1	6.3	8.8	7.7	5.8	7.5	7		6.9	6.5		100
105	6.1	6.2	5.3	9.3	8	6.3	9.1	7.9	6.2	8.6	7.6	5.8	7.3	6.8		6.7	6.4		105
110	5.7	6.1	5.2	9	7.8	6.1	8.9	7.7	6.1	8.4	7.4	5.8	7.1	6.6	5.6	6.5	6.2	5.3	110
115	5.4	5.9	5.2	8.8	7.6	6	8.7	7.6	6	8.2	7.3	5.8	6.9	6.5	5.6	6.3	6.1	5.3	115
120	5	5.5		8.5	7.4	5.9	8.4	7.4	5.8	8	7.1	5.7	6.7	6.3	5.5	6.1	5.9	5.3	120
125				8.3	7.3	5.8	8.2	7.2	5.8	7.8	7	5.6	6.5	6.1	5.4	5.9	5.8	5.3	125
130				8.1	7.1	5.7	8	7.1	5.7	7.6	6.9	5.6	6.3	6	5.4	5.8	5.6	5.2	130
135				7.9	7	5.6	7.8	6.9	5.6	7.3	6.8	5.5	6.1	5.8	5.3	5.6	5.4	5.2	135
140				7.7	6.8	5.5	7.7	6.8	5.5	7.1	6.6	5.4	6	5.7	5.2	5.4	5.3	5.1	140
145				7.5	6.7	5.5	7.5	6.7	5.4	6.9	6.5	5.4	5.8	5.6	5.2	5.3	5.1	5	145
150				7.4	6.6	5.4	7.4	6.6	5.4	6.6	6.4	5.3	5.6	5.4	5.1	5.1	5	5	150
155				7.2	6.5	5.3	7.2	6.4	5.3	6.4	6.3	5.3	5.4	5.3	5.1	5	4.9	4.9	155
160				7	6.4	5.3	7.1	6.4	5.3	6.2	6.1	5.2	5.3	5.2	5.1	4.8	4.7	4.8	160
165				6.9	6.3	5.2	6.9	6.3	5.3	6.1	6	5.2	5.1	5	5	4.7	4.6	4.7	165
170				6.7	6.2	5.2	6.7	6.2	5.2	5.9	5.9	5.2	5	4.9	4.9	4.5	4.5	4.6	170
175				6.5	6.1	5.2	6.3	6.1	5.2	5.7	5.7	5.1	4.9	4.7	4.8	4.4	4.3	4.4	175
180				6.2	6.1	5.2	5.9	6.1	5.2	5.5	5.6	5.1	4.7	4.6	4.7	4.2	4.2	4.3	180
185				6	6	5.2	5.4	6	5.2	5.3	5.4	5.1	4.6	4.5	4.6	4.1	4.1	4.2	185
190				5.8	5.9	5.2	5.1	5.7	5.2	5	5.3	5.1	4.4	4.4	4.5	3.9	4	4.1	190
195				5.5	5.7	5.2	5	5.3	5.2	4.5	5.1	5.1	4.3	4.3	4.4	3.8	3.9	4	195
200				5.1	5.5		4.8	4.9	5	4.1	4.9	5.1	4.1	4.2	4.3	3.7	3.8	4	200
205				4.8	5.2		4.5	4.7	4.8	4	4.5	4.9	3.8	4.1	4.3	3.5	3.7	3.8	205
210							4.2	4.5		3.8	4	4.4	3.3	4	4.2	3.1	3.6	3.7	210
215							3.8	4.3		3.7	3.8	3.9	2.9	3.7	4.1	2.6	3.4	3.6	215
220							3.5	3.3		3.5	3.7	3.8	2.5	3.3	3.7	2.3	3.1	3.5	220
225										3.2	3.5		2.2	2.9	3.2		2.7	3.2	225
230										2.8				2.4	2.7		2.3	2.7	230
235										2.5				2	2.2		1.9	2.2	235
I	0			46/ 0			92/46			92/46			92			100			I
II	0			92/46			92/92			92/92			92			100			II
III	0			92/92			92/92			92/92			92			100			III
IV	0			46/92			46/92			92/92			92			100			IV
V	0			46/92			46/46			46/92			92			100			V

* three-parted folding jib / fléchette pliante à 3 éléments

TAB 138135 / 138138 / 138141

Lifting capacities on the folding jib with boom extension.

LTM 1150/1

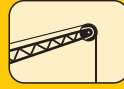
Forces de levage à la fléchette pliante avec télescope rallongé.



41 ft – 184 ft



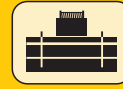
23 ft



37 ft*



360°



110200 lbs

85%

ft	41 ft + 23 ft			146 ft + 23 ft			159 ft + 23 ft			172 ft + 23 ft			184 ft + 23 ft			ft
	37 ft			37 ft			37 ft			37 ft			37 ft			
	0°	20°	40°	0°	20°	40°	0°	20°	40°	0°	20°	40°	0°	20°	40°	
13	17.4															13
14	17.4															14
15	17.4															15
16	17.4															16
17	17.4															17
18	17.3															18
20	17.1															20
22	16.3	15.3														22
24	15.7	15.3														24
26	15	15.3														26
28	14.4	15														28
30	13.8	14.7														30
32	13.3	14.1	13.7													32
34	12.7	13.6	13.6													34
36	12.2	13.1	13.5	17.4												36
38	11.7	12.5	13.1	17.4			17									38
40	11.2	12.1	12.6	17.4			16.9									40
45	10.2	10.9	11.5	17.3			16.4			15			12.6			45
50	9.4	9.9	10.6	16.6	15.3		15.7	14.8		14.7			12.5			50
55	8.6	9.1	9.7	15.8	14.9	13.7	15.2	14.5		14.2	13.3		12.3	11.6		55
60	7.9	8.4	8.8	15	14.2	13.5	14.6	13.8		13.7	13.2		12	11.6		60
65	7.3	7.8	8.2	14.2	13.6	13	13.9	13.3	12.6	13.2	12.7	12.2	11.6	11.2		65
70	6.8	7.2	7.6	13.5	13	12.4	13.2	12.7	12.2	12.6	12.1	11.8	11.2	10.9	10.4	70
75	6.3	6.7	7	12.8	12.4	11.9	12.6	12.1	11.7	12.1	11.7	11.4	10.8	10.5	10.3	75
80	5.8	6.1	6.4	12.2	11.8	11.4	12	11.6	11.3	11.6	11.2	11	10.4	10.1	10	80
85	5.2	5.6	5.9	11.6	11.3	11	11.5	11.1	10.9	11.1	10.8	10.6	10	9.7	9.7	85
90	4.7	5		11	10.8	10.6	11	10.7	10.5	10.7	10.4	10.2	9.7	9.4	9.3	90
95				10.5	10.3	10.2	10.5	10.3	10.1	10.2	10	9.9	9.3	9.1	9	95
100				10	9.8	9.8	10.1	9.8	9.7	9.9	9.6	9.5	9	8.8	8.7	100
105				9.6	9.4	9.4	9.7	9.5	9.4	9.5	9.3	9.2	8.7	8.5	8.5	105
110				9.2	9	9	9.4	9.1	9	9.2	9	9	8.4	8.2	8.2	110
115				8.9	8.7	8.7	9.1	8.8	8.7	8.9	8.7	8.7	8.1	8	8	115
120				8.6	8.4	8.4	8.7	8.5	8.5	8.6	8.4	8.4	7.9	7.7	7.7	120
125				8.2	8.1	8.1	8.4	8.2	8.2	8.3	8.2	8.2	7.6	7.5	7.5	125
130				7.9	7.8	7.8	8.1	8	8	8.1	7.9	7.9	7.3	7.3	7.3	130
135				7.5	7.6	7.6	7.8	7.7	7.7	7.8	7.7	7.7	7	7.1	7.1	135
140				7.2	7.3	7.3	7.5	7.5	7.5	7.5	7.5	7.5	6.8	6.8	6.9	140
145				7	7	7.1	7.2	7.2	7.3	7.3	7.3	7.3	6.6	6.6	6.7	145
150				6.8	6.8	6.9	6.9	7	7	7	7.1	7.1	6.4	6.4	6.5	150
155				6.5	6.5	6.6	6.7	6.7	6.8	6.8	6.8	6.9	6.2	6.2	6.3	155
160				6.3	6.3	6.4	6.5	6.5	6.6	6.6	6.6	6.7	6	6	6.1	160
165				6	6.1	6.2	6.3	6.3	6.4	6.4	6.4	6.5	5.8	5.8	5.9	165
170				5.8	5.9	5.9	6.1	6.1	6.2	6.2	6.2	6.3	5.5	5.6	5.7	170
175				5.5	5.6	5.6	5.9	5.9	6	5.9	6	6.1	5.3	5.4	5.5	175
180				5.2	5.3	5.3	5.7	5.7	5.8	5.6	5.8	5.9	5	5.2	5.3	180
185				5	5.1		5.5	5.6	5.6	5.1	5.4	5.6	4.8	5	5.1	185
190				4.7	4.8		5.3	5.4	5.4	4.6	5	5.1	4.4	4.7	4.8	190
195							5	5.1	5.2	4.1	4.4	4.6	3.9	4.3	4.4	195
200							4.7	4.8		3.6	3.9	4	3.4	3.8	3.9	200
205										3.2	3.4	3.5	2.9	3.3	3.4	205
210										2.7	3		2.5	2.8	2.9	210
215										2.3	2.5		2.1	2.4	2.4	215
220													2	2		220
I	0			0			46			92			100			I
II	0			92			92			92			100			II
III	0			92			92			92			100			III
IV	0			92			92			92			100			IV
V	0			92			92			92			100			V

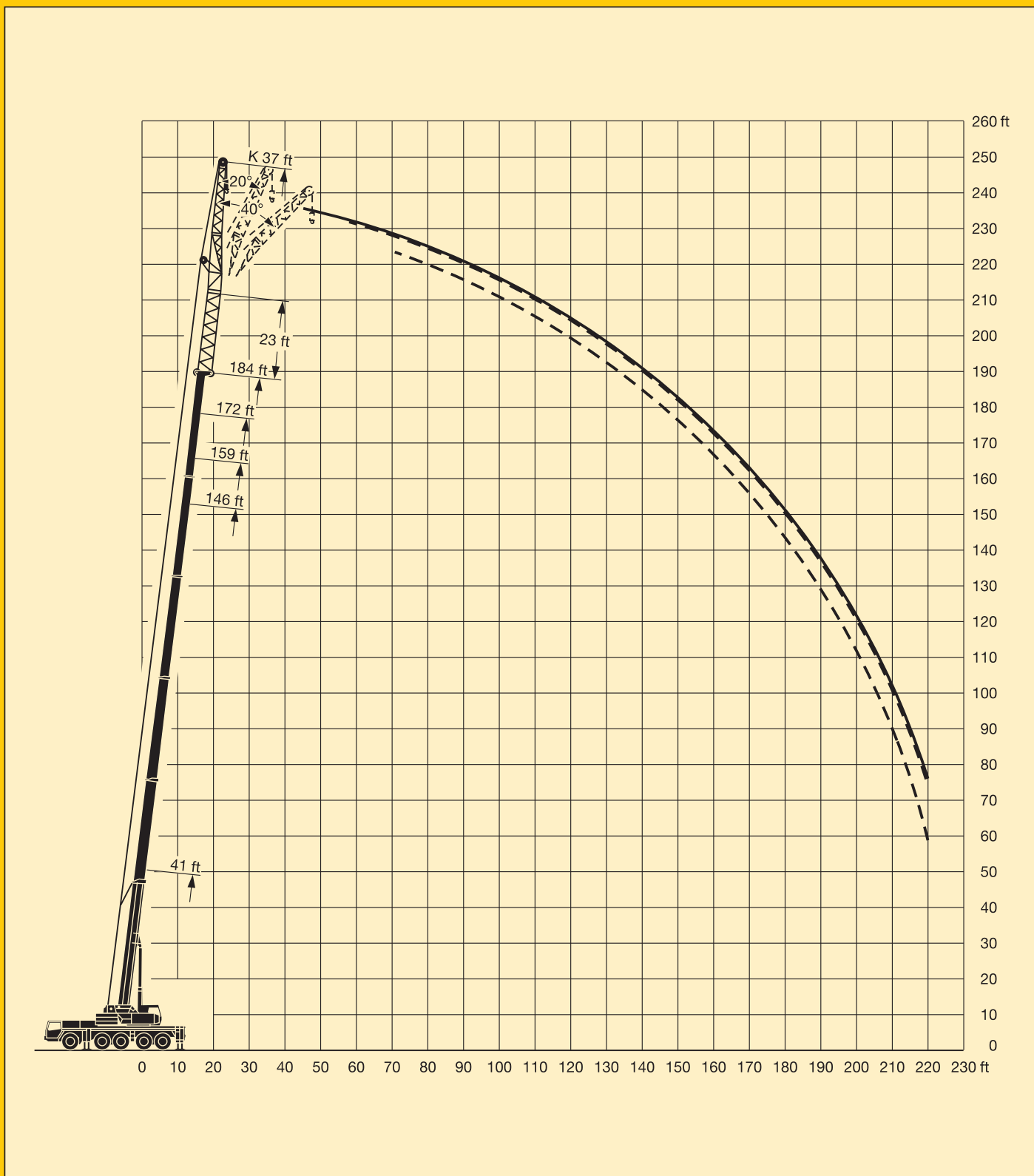
* one-parted folding jib / fléchette pliante à 1 élément

TAB 138144 / 138147 / 138150

Lifting heights. Hauteurs de levage.

LTM 1150/1

Folding jib.
Flèche pliante.



Lifting capacities on the folding jib with boom extension.

LTM 1150/1

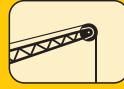
Forces de levage à la fléchette pliante avec télescope rallongé.



41 ft – 184 ft



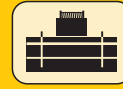
23 ft



60 ft*



360°



110200 lbs



85%

ft	41 ft + 23 ft			146 ft + 23 ft			159 ft + 23 ft			172 ft + 23 ft			184 ft + 23 ft			ft
	60 ft			60 ft			60 ft			60 ft			60 ft			
	0°	20°	40°	0°	20°	40°	0°	20°	40°	0°	20°	40°	0°	20°	40°	
18	12.1															18
20	12.1															20
22	12.1															22
24	12.1															24
26	12															26
28	11.7															28
30	11.4															30
32	11															32
34	10.7															34
36	10.4	10														36
38	10	10		12.1												38
40	9.7	9.9		12.1												40
45	8.9	9.3		12.1			11.4			10.4						45
50	8.3	8.7	8.6	12.1			11.4			10.4			9			50
55	7.7	8.2	8.4	11.9			11.3			10.4			9			55
60	7.1	7.6	8	11.5			11			10.2			8.9			60
65	6.6	7.1	7.4	11	10		10.7	9.7		10			8.8			65
70	6.2	6.7	7	10.6	9.7		10.2	9.5		9.7	9		8.6	8.3		70
75	5.8	6.2	6.6	10.1	9.3	8.6	9.8	9.1		9.4	8.8		8.4	8.1		75
80	5.4	5.8	6.2	9.6	8.9	8.5	9.4	8.8		9.1	8.5		8.1	7.9		80
85	5.1	5.4	5.8	9.2	8.6	8.3	9.1	8.5	8.1	8.7	8.3	7.8	7.9	7.6		85
90	4.7	5.1	5.4	8.9	8.3	8	8.7	8.2	7.9	8.4	8	7.7	7.7	7.4	7.1	90
95	4.3	4.7	5.1	8.5	8	7.7	8.4	8	7.6	8.2	7.8	7.5	7.4	7.2	7	95
100	4	4.4	4.7	8.1	7.8	7.5	8.1	7.7	7.4	7.9	7.5	7.3	7.2	7	6.8	100
105	3.7	4.1		7.8	7.5	7.2	7.8	7.5	7.2	7.6	7.3	7.1	6.9	6.8	6.6	105
110	3.4	3.7		7.5	7.2	7	7.5	7.2	7	7.4	7.1	6.9	6.7	6.5	6.4	110
115				7.2	7	6.8	7.2	7	6.8	7.1	6.9	6.7	6.5	6.3	6.3	115
120				6.9	6.8	6.6	7	6.8	6.6	6.9	6.7	6.5	6.2	6.1	6.1	120
125				6.7	6.5	6.4	6.7	6.6	6.4	6.6	6.5	6.3	6	5.9	6	125
130				6.4	6.3	6.2	6.4	6.3	6.2	6.4	6.3	6.2	5.8	5.8	5.8	130
135				6.1	6.1	6.1	6.2	6.1	6.1	6.2	6.1	6	5.7	5.6	5.6	135
140				5.9	5.9	5.9	6	5.9	5.9	6	5.9	5.9	5.5	5.4	5.4	140
145				5.7	5.6	5.7	5.8	5.7	5.8	5.8	5.7	5.7	5.3	5.3	5.3	145
150				5.5	5.5	5.5	5.6	5.6	5.6	5.6	5.5	5.6	5.1	5.1	5.1	150
155				5.3	5.3	5.3	5.4	5.4	5.4	5.5	5.4	5.4	5	4.9	5	155
160				5.2	5.1	5.2	5.3	5.2	5.3	5.3	5.2	5.3	4.8	4.8	4.8	160
165				5	4.9	5	5.1	5	5.1	5.1	5.1	5.1	4.6	4.6	4.7	165
170				4.7	4.8	4.9	4.9	4.9	5	5	4.9	5	4.5	4.5	4.6	170
175				4.6	4.6	4.7	4.7	4.7	4.8	4.8	4.8	4.9	4.3	4.4	4.5	175
180				4.4	4.5	4.6	4.6	4.6	4.7	4.7	4.7	4.8	4.2	4.2	4.3	180
185				4.2	4.3	4.5	4.4	4.5	4.6	4.5	4.6	4.6	4	4.1	4.2	185
190				4	4.1	4.3	4.3	4.3	4.5	4.4	4.4	4.5	3.9	4	4.1	190
195				3.9	4	4.1	4.1	4.2	4.3	4.1	4.3	4.4	3.7	3.8	3.9	195
200				3.7	3.8	3.9	4	4	4.2	3.7	4.1	4.3	3.4	3.7	3.8	200
205				3.5	3.6		3.8	3.9	4	3.2	3.8	4	3	3.5	3.7	205
210							3.7	3.8	3.9	2.8	3.4	3.6	2.5	3.2	3.5	210
215							3.4	3.7	3.7	2.4	2.9	3.1	2.1	2.7	3	215
220							3	3.3	3.7	2	2.5	2.6		2.3	2.5	220
I		0			0			46			92			100		I
II		0			92			92			92			100		II
III		0			92			92			92			100		III
IV		0			92			92			92			100		IV
V		0			92			92			92			100		V

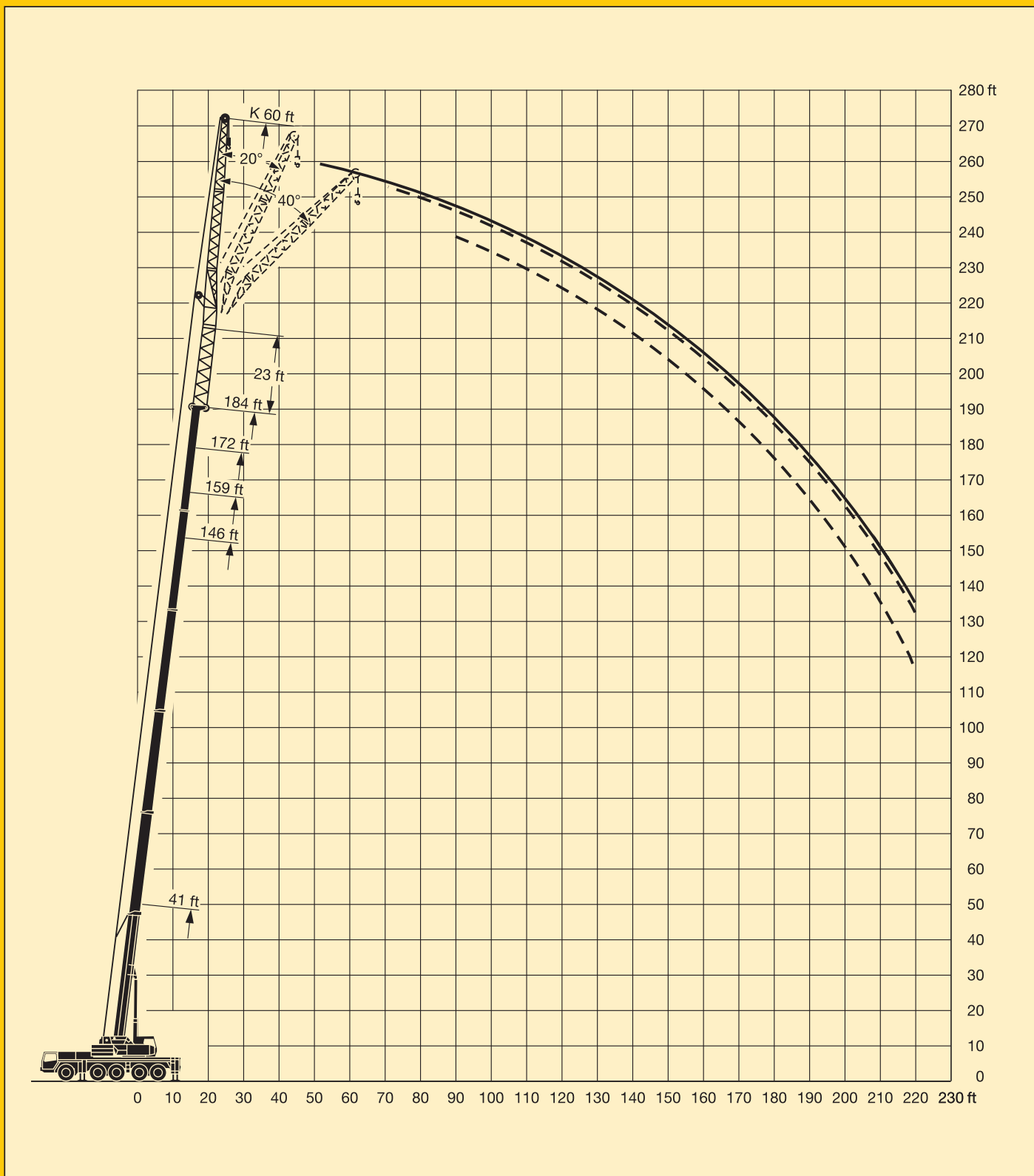
* bi-parted folding jib / fléchette pliante à 2 éléments

TAB 138144 / 138147 / 138150

Lifting heights. Hauteurs de levage.

LTM 1150/1

Folding jib.
Fléchette pliante.



Lifting capacities on the folding jib with boom extension.

LTM 1150/1

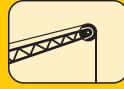
Forces de levage à la fléchette pliante avec télescope rallongé.



41 ft – 184 ft



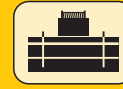
23 ft



69 ft*



360°



110200 lbs

85%

ft	41 ft + 23 ft			146 ft + 23 ft			159 ft + 23 ft			172 ft + 23 ft			184 ft + 23 ft			ft
	69 ft			69 ft			69 ft			69 ft			69 ft			
	0°	20°	40°	0°	20°	40°	0°	20°	40°	0°	20°	40°	0°	20°	40°	
22	10.2															22
24	10.2															24
26	10.2															26
28	10.1															28
30	10															30
32	9.8															32
34	9.7															34
36	9.5															36
38	9.2	8.7														38
40	9	8.7														40
45	8.4	8.7		10.2			9.7									45
50	7.9	8.3		10.2			9.7			9			8			50
55	7.4	7.8	7.5	10.1			9.6			9			8			55
60	6.9	7.3	7.5	10			9.5			8.9			8			60
65	6.4	6.9	7.3	9.8			9.4			8.8			7.9			65
70	6	6.5	6.9	9.5	8.7		9.2	8.3		8.6			7.9			70
75	5.6	6.1	6.5	9.1	8.6		8.9	8.2		8.4	7.8		7.7	7.3		75
80	5.3	5.8	6.1	8.8	8.3		8.6	8.1		8.2	7.7		7.5	7.2		80
85	4.9	5.4	5.7	8.5	8	7.5	8.3	7.8		8	7.6		7.3	7		85
90	4.7	5.1	5.4	8.2	7.7	7.4	8.1	7.6	7.2	7.8	7.4		7.1	6.8		90
95	4.4	4.8	5.1	7.9	7.5	7.2	7.8	7.4	7.1	7.6	7.2	6.8	6.9	6.7	6.4	95
100	4.1	4.5	4.8	7.6	7.2	7	7.6	7.1	6.9	7.4	7	6.7	6.7	6.5	6.3	100
105	3.8	4.2	4.5	7.3	7	6.8	7.3	6.9	6.7	7.1	6.8	6.6	6.4	6.3	6.1	105
110	3.6	3.9	4.2	7.1	6.8	6.5	7	6.7	6.5	6.9	6.6	6.4	6.2	6.1	6	110
115	3.3	3.6	3.7	6.8	6.5	6.3	6.8	6.5	6.3	6.6	6.4	6.2	6	6	5.8	115
120	3	3.3		6.5	6.3	6.2	6.5	6.3	6.1	6.4	6.2	6	5.8	5.8	5.7	120
125				6.3	6.1	6	6.3	6.1	6	6.2	6	5.9	5.6	5.6	5.5	125
130				6.1	5.9	5.8	6.1	5.9	5.8	6	5.9	5.8	5.5	5.4	5.4	130
135				5.8	5.8	5.7	5.9	5.8	5.7	5.8	5.7	5.6	5.3	5.3	5.3	135
140				5.6	5.6	5.5	5.7	5.6	5.5	5.7	5.5	5.5	5.2	5.1	5.1	140
145				5.4	5.4	5.4	5.5	5.5	5.4	5.5	5.4	5.3	5	5	5	145
150				5.2	5.2	5.3	5.3	5.3	5.3	5.3	5.3	5.2	4.8	4.8	4.9	150
155				5	5	5.1	5.2	5.1	5.2	5.2	5.1	5.1	4.7	4.7	4.7	155
160				4.9	4.9	5	5	4.9	5	5	5	5	4.5	4.5	4.6	160
165				4.7	4.7	4.8	4.8	4.8	4.9	4.8	4.8	4.9	4.4	4.4	4.5	165
170				4.6	4.6	4.7	4.7	4.7	4.7	4.7	4.7	4.7	4.3	4.3	4.4	170
175				4.4	4.4	4.5	4.5	4.5	4.6	4.6	4.6	4.6	4.1	4.2	4.2	175
180				4.2	4.3	4.4	4.4	4.4	4.5	4.4	4.4	4.5	4	4	4.1	180
185				4.1	4.1	4.3	4.3	4.3	4.3	4.3	4.3	4.4	3.8	3.9	4	185
190				3.9	4	4.1	4.1	4.1	4.3	4.2	4.2	4.3	3.7	3.8	3.9	190
195				3.8	3.9	4	3.9	4	4.1	4.1	4.1	4.2	3.6	3.7	3.8	195
200				3.6	3.7	3.8	3.8	3.9	4	3.8	4	4.1	3.4	3.6	3.7	200
205				3.5	3.6	3.7	3.7	3.8	3.9	3.5	3.9	4	3.2	3.4	3.6	205
210				3.3	3.4		3.5	3.6	3.8	3.1	3.8	3.9	2.8	3.3	3.4	210
215				3.2	3.3		3.4	3.5	3.6	2.7	3.4	3.6	2.4	3.1	3.3	215
220				3	3.1		3.2	3.4	3.5	2.3	2.9	3.2	2	2.7	3	220
225							3	3.2			2.5	2.7		2.3	2.6	225
230							2.6	2.9								230
235							2.3	2.5								235
240																240
245																245
I	0			0			46			92			100			I
II	0			92			92			92			100			II
III	0			92			92			92			100			III
IV	0			92			92			92			100			IV
V	0			92			92			92			100			V

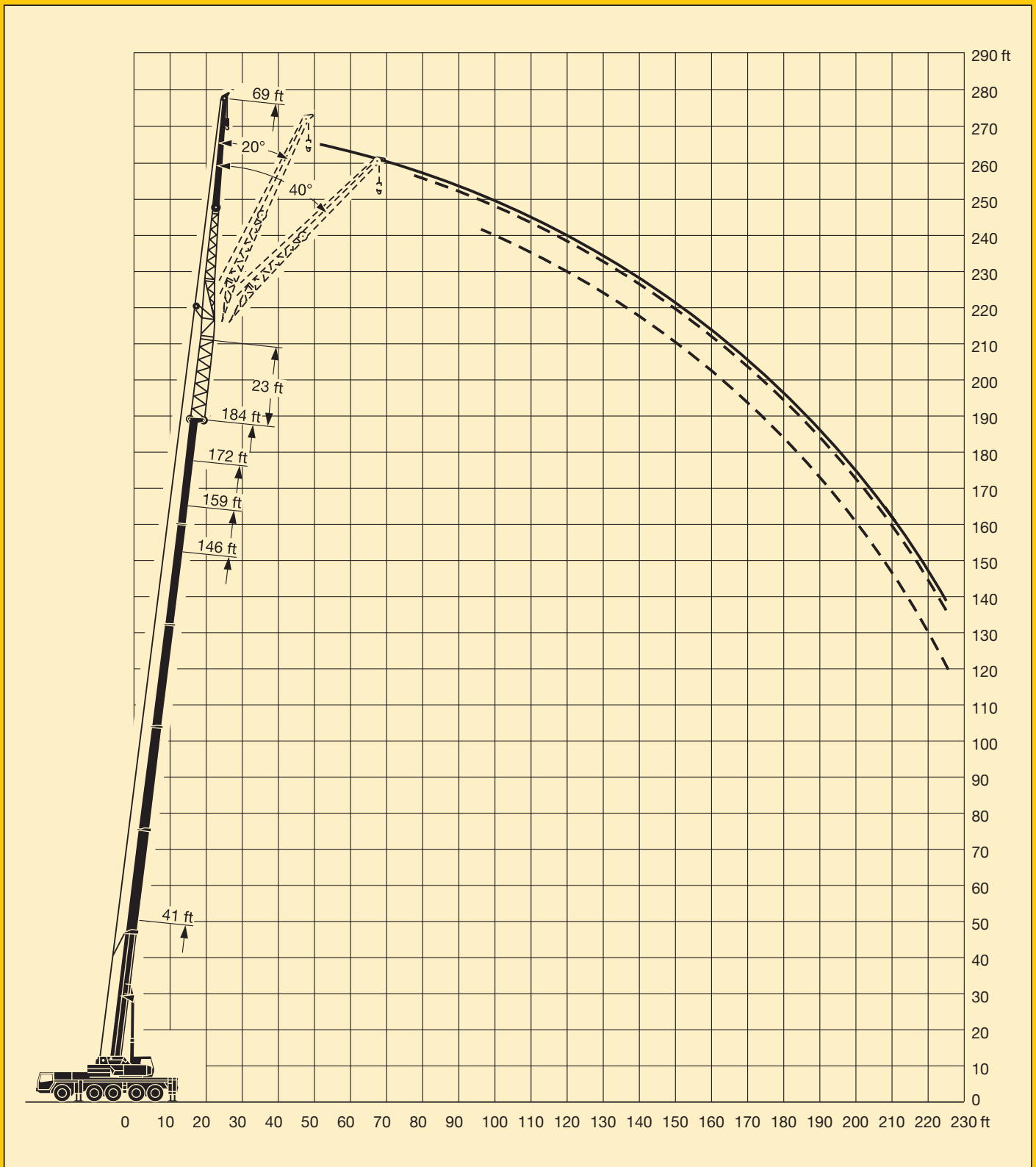
* bi-parted folding jib / fléchette pliante à 2 éléments

TAB 138144 / 138147 / 138150

Lifting heights. Hauteurs de levage.

LTM 1150/1

Folding jib.
Fléchette pliante.



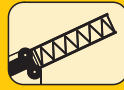
Lifting capacities on the folding jib with boom extension.

LTM 1150/1

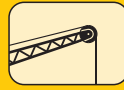
Forces de levage à la fléchette pliante avec télescope rallongé.



41 ft – 184 ft



23 ft



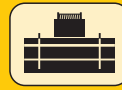
92 ft*



92 ft



360°



110200 lbs

85%

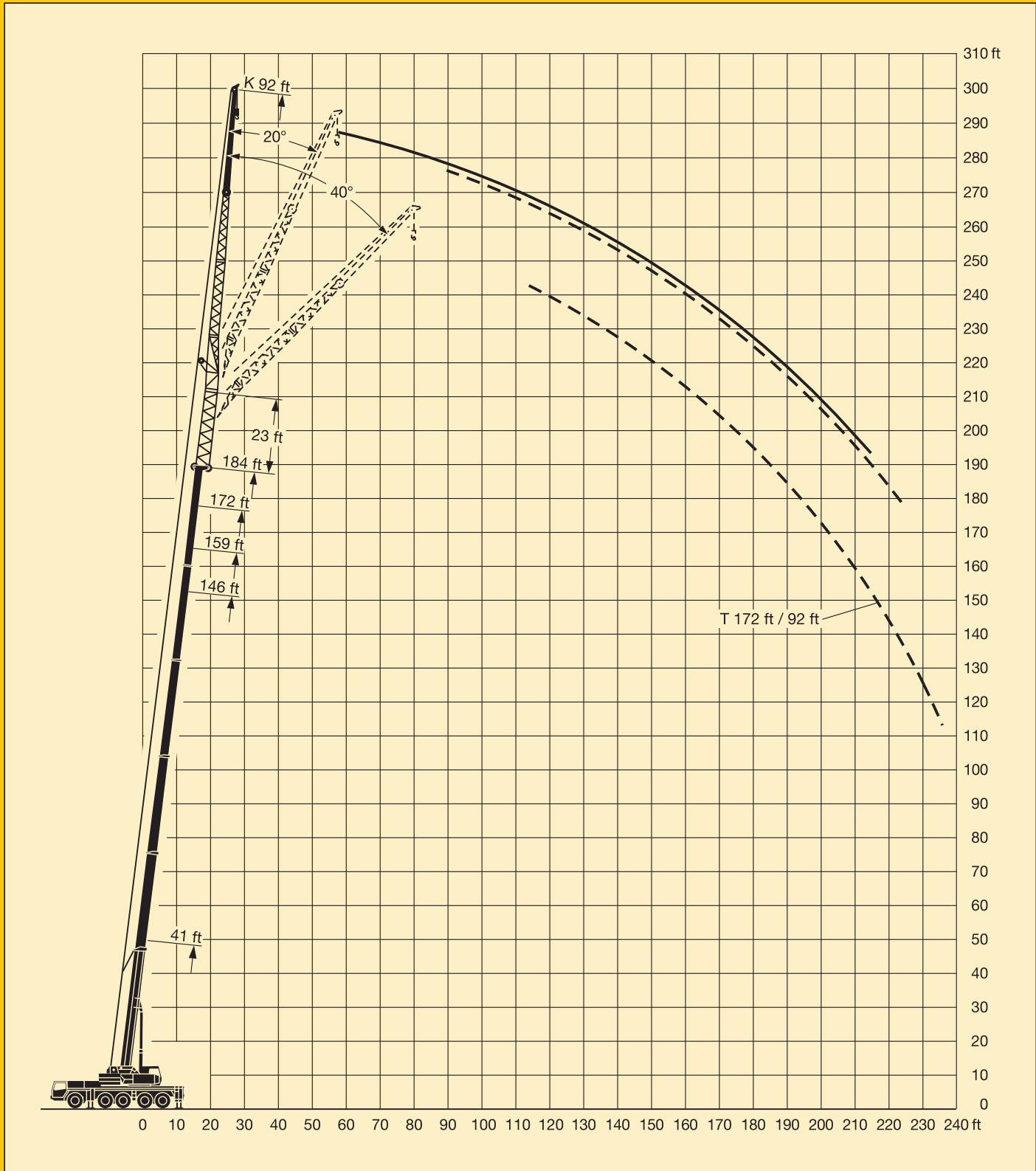
ft	41 ft + 23 ft			146 ft + 23 ft			159 ft + 23 ft			172 ft + 23 ft			184 ft + 23 ft		ft
	0°	20°	40°	0°	20°	40°	0°	20°	40°	0°	20°	40°	0°	20°	
32	7.4														32
34	7.3														34
36	7.3														36
38	7.1														38
40	7														40
45	6.7														45
50	6.4	6		7.5			7			6.3					50
55	6.1	6		7.5			7			6.3			5.3		55
60	5.7	5.9		7.4			7			6.3			5.3		60
65	5.4	5.6		7.3			6.9			6.3			5.3		65
70	5.1	5.4		7.1			6.8			6.3			5.3		70
75	4.8	5.1	4.9	6.9			6.6			6.2			5.3		75
80	4.5	4.8	4.8	6.7			6.5			6.1			5.3		80
85	4.2	4.5	4.7	6.5	6		6.3	5.8		6			5.3		85
90	3.9	4.3	4.5	6.4	5.8		6.1	5.7		5.8	5.4		5.3	4.9	90
95	3.7	4	4.3	6.2	5.7		6	5.5		5.7	5.3		5.2	4.9	95
100	3.4	3.8	4.1	6	5.5	4.9	5.8	5.4		5.6	5.1		5.1	4.8	100
105	3.2	3.6	3.9	5.8	5.3	4.9	5.7	5.3		5.5	5		5	4.7	105
110	3	3.4	3.6	5.6	5.2	4.8	5.5	5.1	4.7	5.4	4.9		4.9	4.6	110
115	2.8	3.2	3.4	5.4	5	4.7	5.3	5	4.6	5.2	4.8	4.4	4.7	4.5	115
120	2.7	3	3.3	5.2	4.9	4.6	5.1	4.8	4.5	5	4.7	4.4	4.5	4.4	120
125	2.6	2.8	3.1	5	4.7	4.5	5	4.7	4.4	4.9	4.6	4.3	4.4	4.3	125
130	2.4	2.7	2.9	4.8	4.6	4.4	4.8	4.5	4.3	4.7	4.4	4.2	4.2	4.1	130
135	2.3	2.5	2.6	4.6	4.4	4.3	4.6	4.4	4.3	4.6	4.3	4.1	4.1	4	135
140	2.2	2.3		4.4	4.2	4.2	4.5	4.2	4.1	4.4	4.2	4.1	4	3.9	140
145				4.3	4.1	4	4.3	4.1	4	4.3	4.1	4	3.8	3.8	145
150				4.1	4	3.9	4.1	4	3.9	4.1	3.9	3.9	3.7	3.6	150
155				3.9	3.8	3.8	4	3.8	3.8	4	3.8	3.8	3.5	3.5	155
160				3.8	3.7	3.7	3.8	3.7	3.7	3.8	3.7	3.7	3.4	3.4	160
165				3.6	3.6	3.6	3.7	3.6	3.6	3.7	3.6	3.6	3.3	3.3	165
170				3.5	3.5	3.5	3.6	3.5	3.5	3.6	3.5	3.5	3.2	3.2	170
175				3.4	3.4	3.4	3.4	3.4	3.4	3.5	3.4	3.4	3.1	3.1	175
180				3.2	3.3	3.3	3.3	3.3	3.3	3.3	3.3	3.3	3	3	180
185				3.1	3.2	3.2	3.2	3.2	3.3	3.2	3.3	3.3	2.9	2.9	185
190				3	3.1	3.1	3.1	3.1	3.2	3.1	3.1	3.2	2.8	2.8	190
195				2.9	2.9	3	3	3	3.1	3	3	3.1	2.7	2.7	195
200				2.8	2.8	2.9	2.9	2.9	3	2.9	2.9	3	2.5	2.6	200
205				2.7	2.7	2.8	2.8	2.8	2.9	2.8	2.8	2.9	2.4	2.5	205
210				2.5	2.6	2.7	2.7	2.7	2.8	2.7	2.7	2.9	2.3	2.5	210
215				2.4	2.5	2.6	2.6	2.6	2.7	2.5	2.7	2.8	2.1	2.4	215
220				2.3	2.4	2.5	2.5	2.5	2.6	2.2	2.6	2.7		2.3	220
225				2.2	2.3	2.4	2.3	2.5	2.6		2.5	2.6		2.2	225
230				2.1	2.2	2.3	2.2	2.4	2.5		2.3	2.5			230
235				2	2.1	2.1	2.1	2.3	2.4		1.9	2.3			235
240				1.8	2			2.2	2.3						240
245								2							245
I	0			0			46			92			100		I
II	0			92			92			92			100		II
III	0			92			92			92			100		III
IV	0			92			92			92			100		IV
% V	0			92			92			92			100		V

* three-parted folding jib / fléchette pliante à 3 éléments

Lifting heights. Hauteurs de levage.

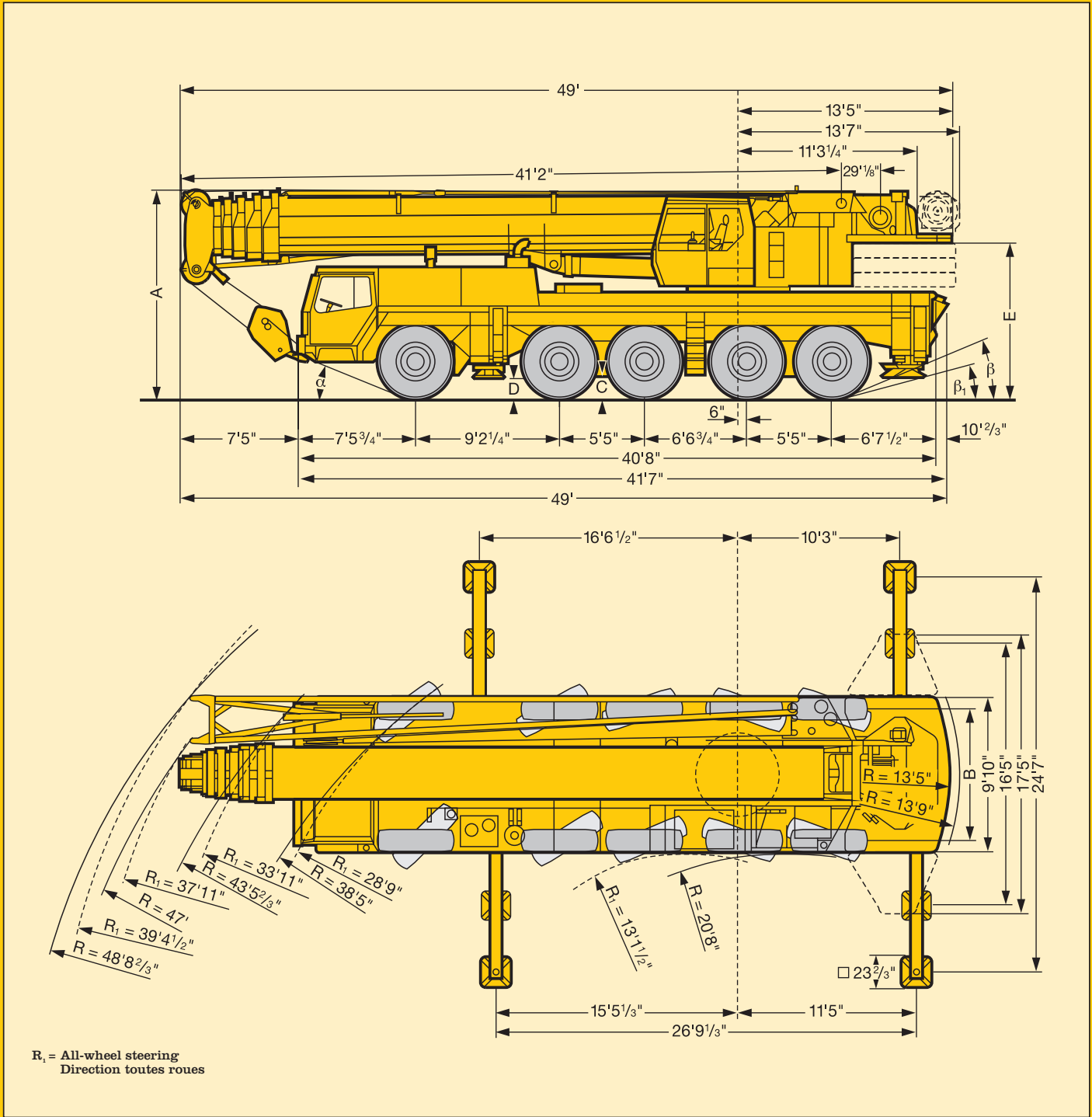
LTM 1150/1


Folding jib.
Fléchette pliante.



Dimensions. Encombrement.

LTM 1150/1



 16.00 R 25	Dimensions / Encombrement								
	A	A 6" *	B	C	D	E	α	β	β ₁
	13'1 ¹ / ₂ "	12'7 ¹ / ₂ "	8'4 ³ / ₄ "	18'1 ¹ / ₂ "	14'2 ¹ / ₃ "	13'3 ¹ / ₄ "	23°	23°	15°

* lowered / abaissé



Axle Essieu	1	2	3	4	5	Total weight (lbs) Poids total lbs
lbs	26500	26500	26500	26500	26500	132500 ¹⁾

¹⁾ with 15400 lbs counterweight / avec contrepoids 15400 lbs







Load (kips) Forces de levage kips	No. of sheaves Poulies	No. of lines Brins	Weight lbs Poids lbs
330 ²⁾	9	18	2900
236	7	14	2730
178	5	11	1550
116	3	7	1550
50	1	3	990
17.6	-	1	550






²⁾ on request / sur demande

Working speeds. Vitesses.



	1	2	3	4	5	R	 %
	9.3	14.3	22.3	33	47	8	-
	5	8	13	19.3	27.3	4.7	45 %
	16.00 R 25						



Drive Mécanismes	infinitely variable en continu	Rope diameter / Rope length Diamètre du câble / Longueur du câble	Max. single line pull Effort au brin maxi.
	0 - 362 ft/min single line ft/min au brin simple	²⁷ / ₃₂ " / 900'	17400 lbs
	0 - 362 ft/min single line ft/min au brin simple	²⁷ / ₃₂ " / 656'	17400 lbs
	0 - 1.8 rpm		
	approx. 50 seconds to reach 83° boom angle env. 50 s jusqu'à 83°		
	approx. 400 seconds for boom extension from 41 ft - 184 ft env. 400 s pour passer de 41 ft - 184 ft		

Crane carrier.

LTM 1150/1

Frame:	Liebherr designed and manufactured, box type, torsion resistant, all-welded construction made of high-tensile structural steel.
Outriggers:	4-point support, all-hydraulic horizontal and vertical operation.
Engine:	8 cylinder, watercooled Liebherr Diesel, type D 9408 TI-E, 400 kW (544 HP) at 2100 rpm acc. to ECE-R 24.03 and 2001/27/EG (Euro 3), max. torque 1825 lbs-ft at 1575 rpm. Fuel tank capacity: 132 gallons.
Transmission:	Allison automatic transmission with torque converter and hydrodynamic retarder brake, 5 forward and 1 reverse speed. Transfer case with off-road range.
Axles:	All axles steered. Axles 1, 4 and 5 with planetary gears and differential locks.
Suspension:	All axles with hydropneumatic suspension and hydraulic locking facility.
Tyres:	10 tyres. Tyre size: 16.00 R 25.
Steering:	Hydraulic power steering with dual circuit hydraulic system, mechanical/hydrostatic from lower cab. Stand-by steering pump. Steering acc. to EC directive 70/311/EEC.
Brakes:	Service brake: Dual circuit, servo-air brake, acting on all wheels. Hand brake: by spring action on all wheels of axles 2 to 5. Brakes acc. to EC directive 71/320/EEC.
Driver's cab:	Spacious all-steel cab on resilient mountings, safety glass windows and full range of instruments.
Electrical system:	24 V DC, 2 batteries, lighting according to countries' regulations.

Crane superstructure.

Frame:	Liebherr-made, torsion-resistant, welded construction made of high-tensile structural steel. Connection to truck chassis by triple roller slewing ring, designed for 360° continuous rotation.
Crane engine:	4 cylinder, watercooled Liebherr Diesel, type D 924 T-E, 120 kW (163 HP) at 1800 rpm acc. to EPA/CARB and to directive 97/68 EG, stage 1, max. torque 529 lbs-ft at 1200 rpm. Fuel tank capacity: 79 gallons.
Crane drive:	Diesel-hydraulic, with 1 duplex axial-piston pump with automatic output control, 1 duplex gear-type pump, open regulated hydraulic circuits. The hydraulic drive in compact construction is directly flanged to the diesel engine.
Crane control:	Load sensing system, 4 working motions can be performed at the same time, by 2 control levers (joy stick type).
Hoist gear:	Axial piston fixed displacement motor, hoist drum with integrated planetary gear and spring loaded static brake.
Luffing gear:	1 differential hydraulic ram with safety check valve.
Slewing gear:	Axial piston fixed displacement motor, planetary gear, spring loaded static brake.
Crane cab:	All-steel construction fully galvanized, safety glazing, heater, controls and instruments.
Safety devices:	LICCON safe load indicator, hoist limit switch, safety valves against rupture of pipe and hoses.
Telescopic boom:	1 base section and 5 telescopic sections, hydraulically extendable under load. All sections extendable independently. Boom length: 41 ft - 184 ft.
Electrical system:	24 V DC, 2 batteries.

Complementary equipment.

Folding jib:	37 ft to 92 ft long, for mounting on telescopic boom at 0°, 20° or 40°.
Telescopic boom extension:	23 ft long lattice section, thus 23 ft higher pinning point for swing-away jib.
2nd hoist gear:	For two-hook operation, or with folding jib in case main hoist shall remain reeved.
Drive 10 x 8:	Axle 2 additionally driven.
Other items of equipment available on request.	

Châssis porteur.

LTM 1150/1

Châssis:	Fabrication Liebherr, construction en caisson indéformable, en acier grain fin à haute résistance.
Stabilisateurs:	Calage en 4 points, à télescopage horizontal et vérinage vertical entièrement hydrauliques.
Moteur:	Diesel, Liebherr, type D 9408 TI-E à 8 cylindres, refroidissement par eau, puissance 400 kW (544 CH) à 2100 rpm selon ECE-R 24.03 et 2001/27/EG (Euro 3), couple maxi. 1825 lbs-ft à 1575 rpm. Capacité réservoir de carburant: 132 gallons.
Boîte:	Boîte automatique, marque Allison, avec convertisseur de couple et frein hydro-dynamique, 5 rapports AV et 1 AR. Boîte transfert avec rapport tout terrain.
Essieux:	Tous essieux directeurs. Essieux 1, 4 et 5 à train planétaire à blocage de différentiel.
Suspension:	Tous les essieux à suspension hydropneumatique et blocables hydrauliquement.
Pneumatiques:	10 pneumatiques. Dimensions des pneumatiques: 16.00 R 25.
Direction:	Direction hydraulique à deux circuits, commande mécanique/hydrostatique depuis la cabine de conduite. Pompe de direction auxiliaire. Direction selon directive CE70/311/CEE.
Freins:	Frein de service: Servofrein pneumatique à 2 circuits, agissant sur toutes les roues. Frein à main: Par cylindres à ressort, agissant sur les roues des essieux 2 à 5. Freins selon directive CE 71/320/CEE.
Cabine de conduite:	Cabine spacieuse, entièrement en tôle d'acier, à suspension élastique, vitrage de sécurité, éléments de contrôle.
Installation électrique:	24 volts continus, 2 batteries, éclairage conforme au code.

Partie tournante.

Châssis:	Fabrication Liebherr, construction soudée indéformable en acier à grain fin de haute résistance. Couronne d'orientation à triple rangées de rouleaux entre partie tournante et châssis porteur permettant une rotation continue.
Moteur:	Diesel, Liebherr, type D 924 T-E, à 4 cylindres, refroidissement par eau, puissance 120 kW (163 CH) à 1800 rpm selon EPA/CARB et étage 1, les directives 97/68 CE, couple maxi. 529 lbs-ft à 1200 rpm. Capacité réservoir de carburant: 79 gallons.
Entraînement de grue:	Diesel-hydraulique, comprenant 1 double pompe à pistons axiaux à régulation de puissance, 1 double pompe à engrenages, circuits hydrauliques ouverts contrôlés. L'entraînement hydraulique en construction compacte, bridé directement au moteur diesel.
Commande:	Load sensing, 4 mouvements simultanés sont possible, par deux manipulateurs (type manche à balai).
Mécan. de levage:	Moteur hydraulique à cylindrée constante, treuil à réducteur planétaire incorporé et frein d'arrêt à ressort.
Mécan. de relevage:	Vérin hydraulique différentiel avec soupape de retenue.
Mécan. d'orientation:	Moteur hydraulique à cylindrée constante, réducteur planétaire, frein d'arrêt à ressort.
Cabine du grutier:	Entièrement en tôle d'acier avec vitrage de sécurité, chauffage, organes de commande et de contrôle.
Dispositifs de sécurité:	Contrôleur de charge LICCON, fin de course de levage, soupapes de sécurité sur tubes et flexibles contre rupture.
Flèche télescopique:	1 élément de base et 5 éléments télescopiques, télescopables hydrauliquement sous charge. Tous les éléments télescopables individuellement. Longueur de flèche: 41 ft – 184 ft.
Installation électrique:	24 volts continus, 2 batteries.

Équipement optionnel.

Fléchette pliante:	37 ft à 92 ft de long, pour montage à la flèche télescopique à 0°, 20° ou 40°.
Rallonge flèche télescopique:	Élément en treillis de 23 ft, de cette manière point d'articulation plus haute de 23 ft pour la flèche pliante.
2ème mécan. de levage:	Pour le travail avec 2 crochets ou pour le travail avec fléchette pliante lorsque le câble de levage principal reste mouflé.
Entraînement 10 x 8:	2ème essieu est entraîné additionnellement.
Autres équipements supplémentaires sur demande.	

Subject to modification. / Sous réserve de modifications.

TP 315a.US.2.02

Please contact

Veillez prendre contact avec

LIEBHERR-WERK EHINGEN GMBH

D-89582 Ehingen/Donau, Telefon (0 73 91) 5 02-0, Telefax (0 73 91) 5 02-33 99

www.liebherr.com, E-mail: info@lwe.liebherr.com

CD-